

MODERN LUXURY

Scottsdale

MOORE, *PLEASE!*

TALKING TURKEY,
THE HUNGER GAMES
& LIFE'S RICH BOUNTY
WITH JULIANNE MOORE

WINE & DINE

SOUTHERN-INSPIRED
OKRA OPENS ITS DOORS

CHEF TODD ALLISON'S
FRESH TAKE ON T. COOK'S

TRENDING NOW: OCTOPUS

CHEZ COCO *CHANEL*

THE HOUSE'S
FALL COUTURE
FROM FASHION'S
ICONIC ADDRESS

HOLIDAY *GIVING*

UNFORGETTABLE
GIFT IDEAS

Philanthropy *PORTFOLIO*

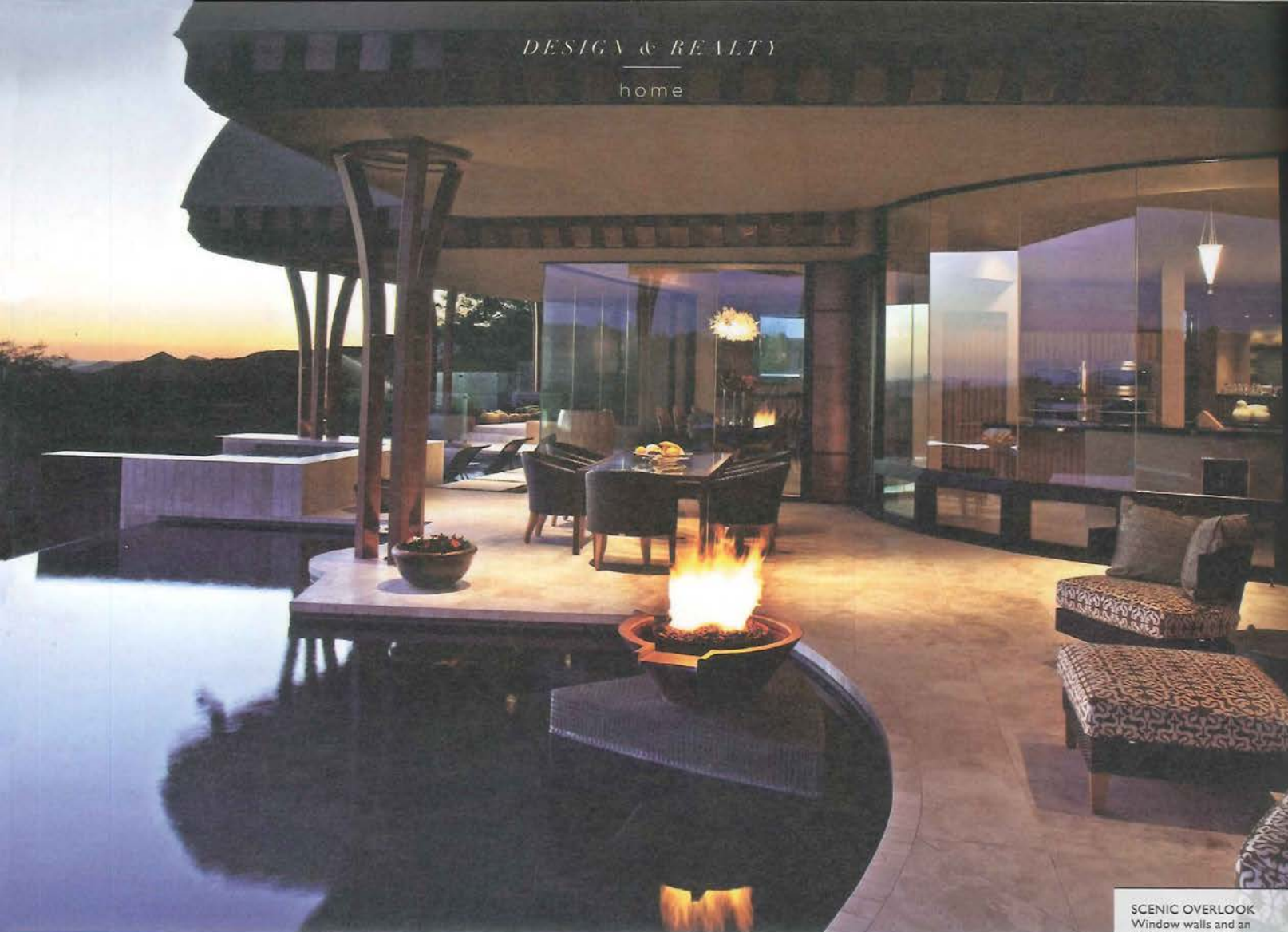
THE VALLEY'S TOP PLAYERS, GALAS &
CHARITABLE CAUSES OF THE SEASON

SCOTTSDALE 6991 E. CAMELBACK ROAD, STE. C-310, SCOTTSDALE, AZ 85251

MODERNLUXURY.COM



NOVEMBER 2015 \$5.95



SCENIC OVERLOOK Window walls and an expansive patio open the back of the house to stunning desert views. Travertine flooring was used inside and on the patio, blurring the line between indoors and out. The negative-edge pool and spa were designed to reflect the sky.

CURVING CONTEMPORARY

A Desert Mountain home's sweeping design captures stunning views as well as the hearts of its owners.

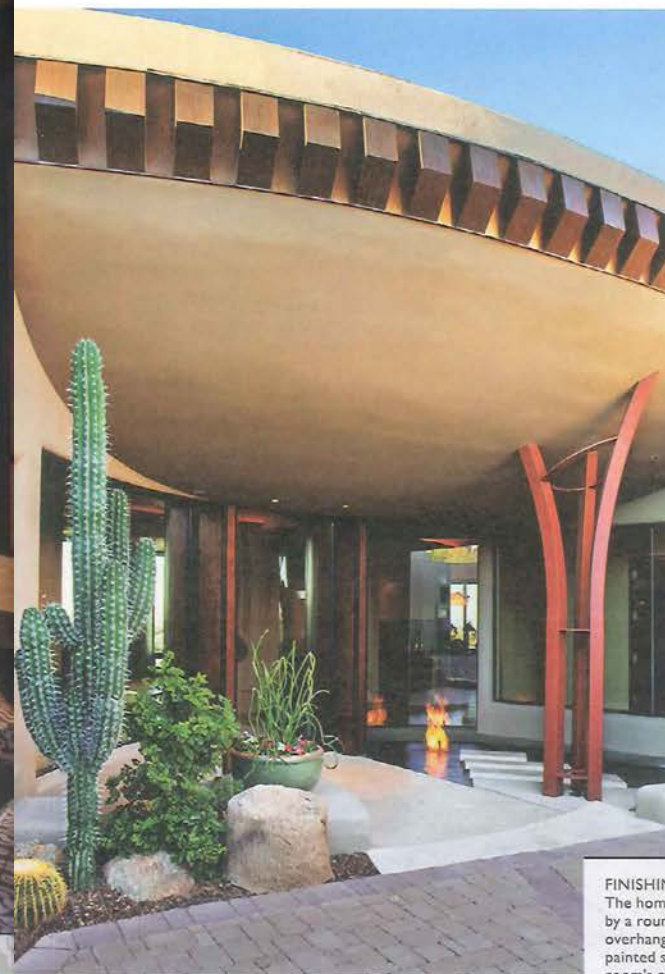
By Nora Burba Trulson
Photography by Steve Thompson

For decades, Desert Mountain has been one of North Scottsdale's most desirable communities. With some 8,000 acres and six golf courses tucked at the edge of the mountainous Tonto National Forest, the high desert setting inspires innovative architecture for the homes that dot what was once a historic cattle ranch.

And that same access to great golf, panoramic views and the desert itself is what inspired a Midwestern couple to purchase a home in the community. The couple, with grown children and grandchildren, knew they wanted to remodel the home to suit their needs. However, after consulting with their chosen architect, Lee Hutchison, AIA (urbandesignassociatesltd.com), and interior designer Paula Den Boer (ashleypdesign.com), all parties agreed that a complete fresh start would be better.

"The original house on the lot was pueblo style," recalls Hutchison, principal of Urban Design Associates, which he founded in Scottsdale in 1980. "But the more

CONTINUED...



FINISHING TOUCHES From left: The home's front door is shaded by a rounded copper-trimmed overhang and supported by a painted steel column; the great room's granite slab fireplace provides a warm backdrop for a custom sofa and silk area rug.



...CONTINUED we talked, the more the owners started expressing an interest in an open, contemporary design with good views. In the end, it would cost more to save the old house than to build new."

Hutchison created a heart-shaped plan for the residence—with curving walls—that gives virtually every room in the 5,000-square-foot main house lovely views.

The plan leads visitors from the gated auto court and over a water feature to the entrance, where a foyer winds into the center of the home. To one side, visiting family and friends can find privacy in the two guest bedrooms and the attached 700-square-foot guest casita. On the opposite side, the homeowners can retreat to a master suite, as well as a home office and media room.

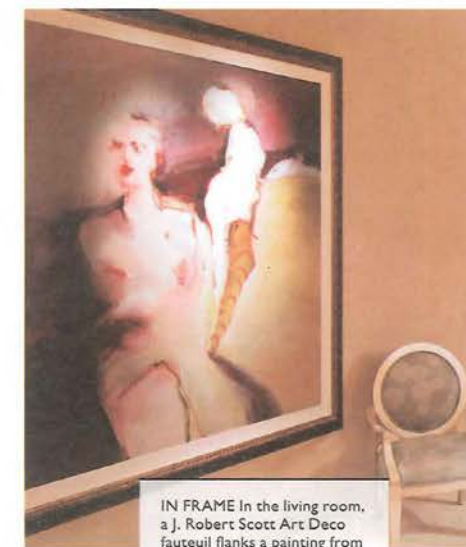
For the new exterior, Hutchison modernized traditional, rounded pueblo

forms, interspersing the thick sand-colored walls with sleek window walls, shaded by deep overhangs. He detailed the soffits with an egg-and-dart pattern crafted of patinaed copper and designed slender, curving columns to support the overhangs. "We didn't want a lot of heavy columns blocking the views," he explains.

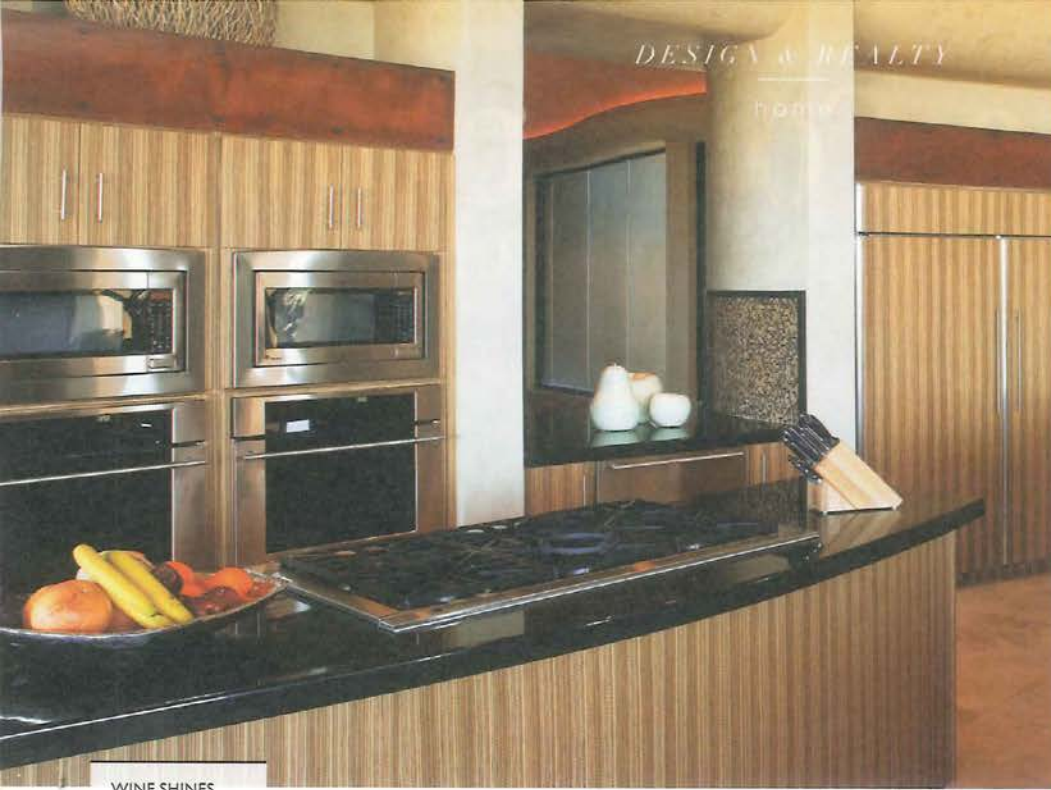
Indoors, stone, wood and metals create a background for custom details such as the foyer's domed spiral ceiling, copper-clad interior columns, an illuminated glass-walled wine closer and the rugged slabs of black granite surrounding the mountain-shaped fireplace in the living area.

The home's dramatic lines also provide a framework for the contemporary furnishings and the couple's art collection. "The owners brought some pieces with them from their home

CONTINUED...



IN FRAME In the living room, a J. Robert Scott Art Deco fauteuil flanks a painting from Horizon Art, Scottsdale.



WINE SHINES
A glass wine closet adds sparkle to a hallway near the dining room.



CURVE APPEAL
Clockwise from top left: Zebra wood cabinetry, black granite countertops and modern art create a striking setting in the kitchen; an illuminated soffit and mother-of-pearl wallcovering create a luxurious alcove in the master bedroom; a steel-clad fireplace and a curved desk with a view mark the home office.



« “...The more we talked, the more the owners started expressing an interest in an open, contemporary design with good views. In the end, it would cost more to save the old house than to build new.”

—ARCHITECT LEE HUTCHISON »

...CONTINUED in the Midwest,” explains Den Boer, who started Scottsdale-based Ashley P. Designs in 1977. “They also wanted some furnishings that expressed the home’s design and wanted to create a house where they could relax, entertain and enjoy their grandchildren.”

Using a palette of cream, sand, taupe and black, Den Boer created an elegant setting with pops of color and finishes durable enough to withstand use by the family’s youngest generation.

In the living area, a custom sofa is covered in a plush Sunbrella fabric. The setting is underscored by a custom silk area rug and highlighted with modern art and a Louis XVI-style fauteuil. In the master bedroom, the mother-of-pearl wallcovering creates a shimmering alcove for the silk-covered bed. A deep soaking tub, set on walnut legs, anchors the master bath, which is warmed by a raised fireplace, framed in patinaed steel.

When it came to the powder room, the homeowners gave Den Boer carte blanche. “They asked me to create something dramatic,” she explains, “something unexpected.” She paired a black marble vessel sink with a waterfall faucet, set on an underlit black granite countertop, then created a graphic pattern made of polished stone tiles for the wall.

The home’s exterior also received exacting attention to detail. In addition to the entry’s visually cooling water feature, a reflecting pool just outside the dining room adds a touch of serenity, while the main patio is anchored by a glass-tiled, negative-edge pool and spa. Also on the patio, an outdoor kitchen, bar, fireplace and comfortable furniture create inviting spaces to dine, entertain and enjoy the desert setting.

Now completed, the home has given the owners not only their desired views, but also a welcome respite from cold Midwestern winters, and a desert gathering place for family and friends. ■