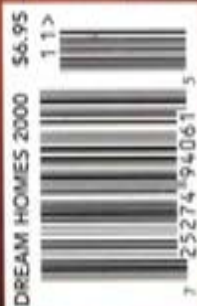


Phoenix Home & Garden

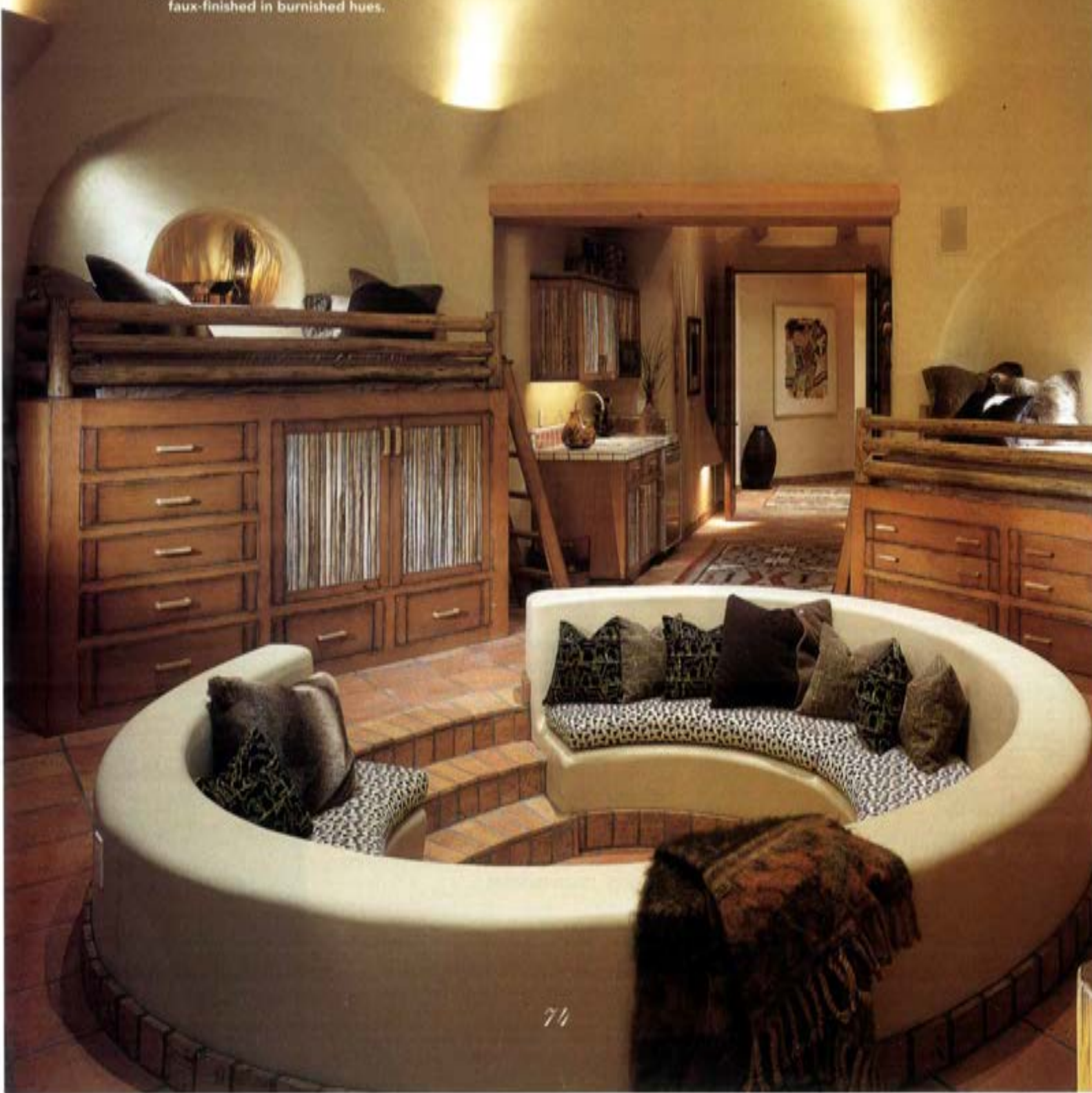
# Dream Homes

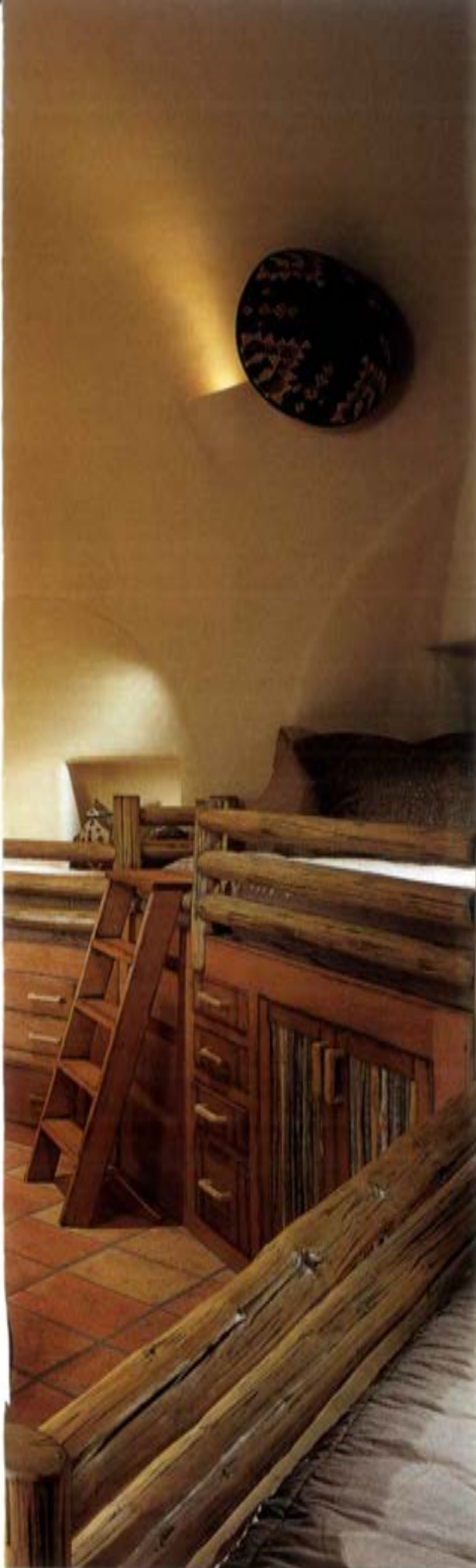
Special Collector's Issue



This page: Inspired by Indian dwellings, this kiva room is a collaborative effort of architect Lee Hutchison and homeowner Len Mactas. "For Native Americans, a kiva is a place where everyone meets and settles problems and discusses things, and for the grandchildren, a kiva seemed like it would be a warm and cozy environment," says Lee Mactas.

Opposite, top: With its Juperana Viara granite slab vanity and clay-colored Kohler "Vessels" bowl sink, the powder room is a study in earthy elegance. Walls are faux-finished in burnished hues.





# Kiva House

PHOTOGRAPHY BY DINO TONN

With natural gathering places that nurture feelings of closeness and warmth, this comfortable desert dwelling sends a welcoming message to the children and grandchildren of Len and Lee Mactas.

Built of adobe block and stucco in a modified Pueblo style, the 5,500-square-foot residence was designed by Lee Hutchison of Urban Design Associates and built by Shiloh Homes. Nancy Kitchell coordinated the eclectic interiors. The trio attributes the distinctiveness of this north Scottsdale home to its owners.

"They are well-traveled, sophisticated, knowledgeable, open to innovative ideas and had good suggestions for what they wanted in their home," says Shiloh's Ken Madden. "For example, they wanted a kiva bedroom so they could sit in the sunken conversation pit with their grandchildren and read stories."

A photograph of a high-ceilinged office. The room features a prominent beehive-shaped fireplace with a warm fire burning inside. The floor is made of light-colored Australian cypress wood. In the foreground, a dark wooden desk is set up with a chair. The ceiling is high and features a complex wooden beam structure. Large windows are visible in the background, and the overall atmosphere is warm and sophisticated.

This page: The glow from a beehive fireplace casts a subtle gleam across Australian cypress flooring in Len Mactas' balcony-level office. Adjoining the area, which overlooks the great room, is a private patio.

Opposite: The homeowners asked interior designer Nancy Kitchell to create spaces that are understated, contemporary, eclectic and comfortable. In this high-ceilinged great room, as in other areas of the house, a sophisticated lighting plan diffuses light softly and evenly.

This unique circular room has four sets of custom bunk beds with an entertainment center built into one. Placed conveniently nearby are a wet bar and a refrigerator for snacks. Two bedroom suites, each with a bathroom, are situated on either side for the Mactases' "big kids." In a separate grandchildren's bathroom, lighting shines through a rainbow-colored filter and emits a neonlike glow.

Another favorite spot is a fireplace hearth near the kitchen. "I wanted a hearth room like that of olden times," says the lady of the house. "When our kids and grandkids visit we all gather in this area, and when they are not here, it's where Len and I have our morning coffee."

Len's sanctuary, a handsome glass-walled office, distinguishes the mezzanine level. It boasts the same attention to detail as rooms in other parts of the house. The unique ceiling, for example, features rough-sawn beams set across Saltillo tiles. A beehive fireplace cozies up a corner, and a

private patio affords a view of the pool area and a nearby golf course.

To add the upper-level office Len wanted and still meet neighborhood building requirements, Hutchison located the master bedroom suite below the home's main level. The result, only a few steps down, is a private retreat, set apart from guest quarters and the din of visiting grandchildren.

Notable for featuring such materials as stone, ponderosa pine vigas and Saltillo tile in visually exciting ways, and for its livability both indoors and out, the residence won the National Association of Home Builders and *Professional Builder* magazine's 1998 Platinum Award in the "Best in American Living" category.

It's also a hit with the Mactases' five sons, their wives and 10 grandchildren, who are encouraged to visit often, says Lee Mactas. "The grandkids think their grammy and *ayda* (grandpa) are so cool."

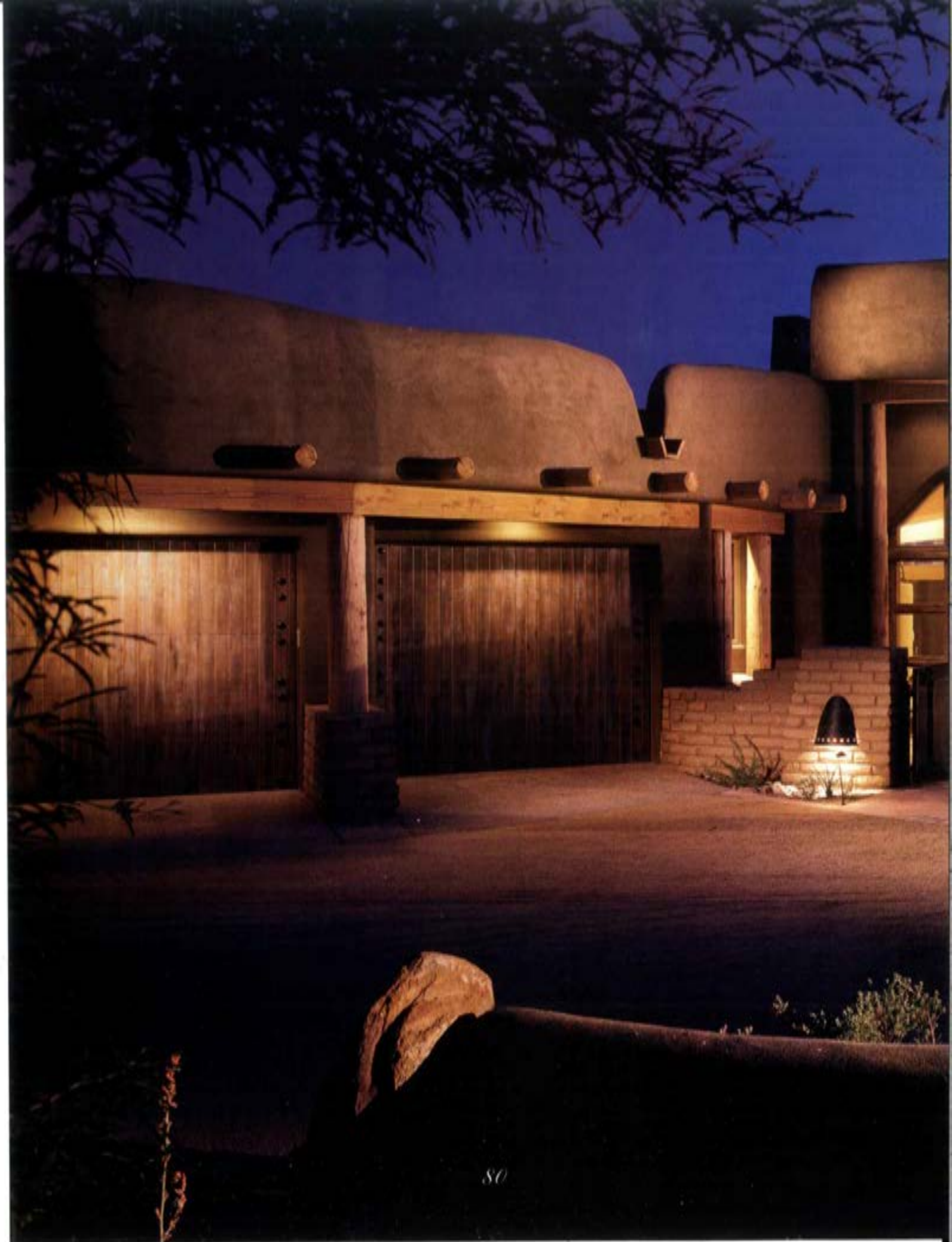




Opposite and below:  
A cozy adobe-brick fireplace, an entertainment center concealed behind punched-tin doors, and plenty of room to sit and enjoy a meal or treat make the kitchen's hearth room a favorite spot of visiting children and grandchildren.

Right: A custom island in the kitchen is part table with cooktop and part drum-shape snack bar. "The Mactases thought of the kitchen as the hub of the house," says Hutchison. "We took the shape of the center island and echoed it in the ceiling, and vigas radiate out from that." Outside, an overhang of *latillas* forms a rustic pattern and shields windows from the sun.







Built by Shiloh Custom Homes, this award-winning residence features exterior walls that contrast rough-textured adobe block with smooth stucco. 25

